

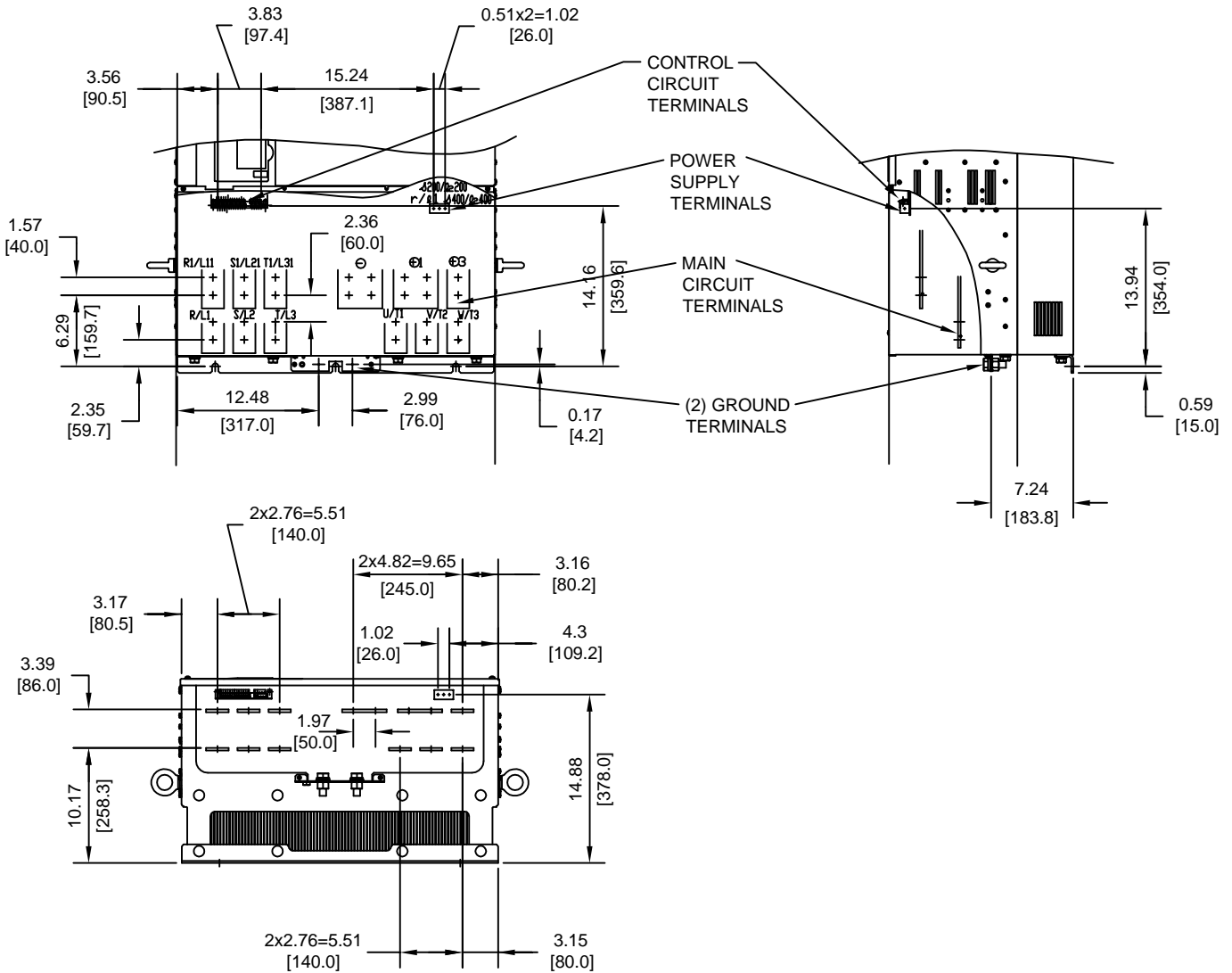
MODEL #	VOLTAGE (VAC)	OUTPUT CURRENT (A)		WEIGHT LBS (Kg)	HEAT LOSS (W)		
		ND2	HD		INT	EXT	TOTAL
4185	480	414	370	613 (279)	1328	2636	3964
4220		515	506	657 (299)	1712	3797	5509

ND2=NORMAL DUTY 2
HD=HEAVY DUTY
INT=INTERNAL COMPONENTS
EXT=EXTERNAL HEATSINK

FOR ADDITIONAL DETAILS AND SPECIFICATIONS, CONSULT MANUAL

TOLERANCES/REFERENCES:		<p>YASKAWA A World of Automation Solutions™</p> <p>YASKAWA ELECTRIC AMERICA, INC. Corporate Headquarters 2121 Norman Drive South Waukegan, IL 60085 1-800-YASKAWA http://www.yaskawa.com</p>	DRAWN: J. MATTAS CHECKED: J. MATTAS TECH: J. CAIRO APPROVED: T. SASADA ORIGINAL DESIGN: -	DATE: 5-21-08 DATE: 7-25-08 DATE: 8-1-08 DATE: 8-8-08 DATE: -	TITLE: F7 DIMENSION DRAWING FRAME SIZE 14 NEMA TYPE 1/IP20 ENCLOSURE F7U4185, 4220 SIZE: A REVISION: R00 PAGE: 1 of 3
UNITS: IN[mm]	SCALE: 1:15		DRAWING #: DD.F7.FR14.N1.01		

TERMINAL AND WIRING DETAILS (SCALE 1:15)




TERMINAL AND WIRE SPECIFICATIONS FOR MAIN CIRCUIT AND GROUND

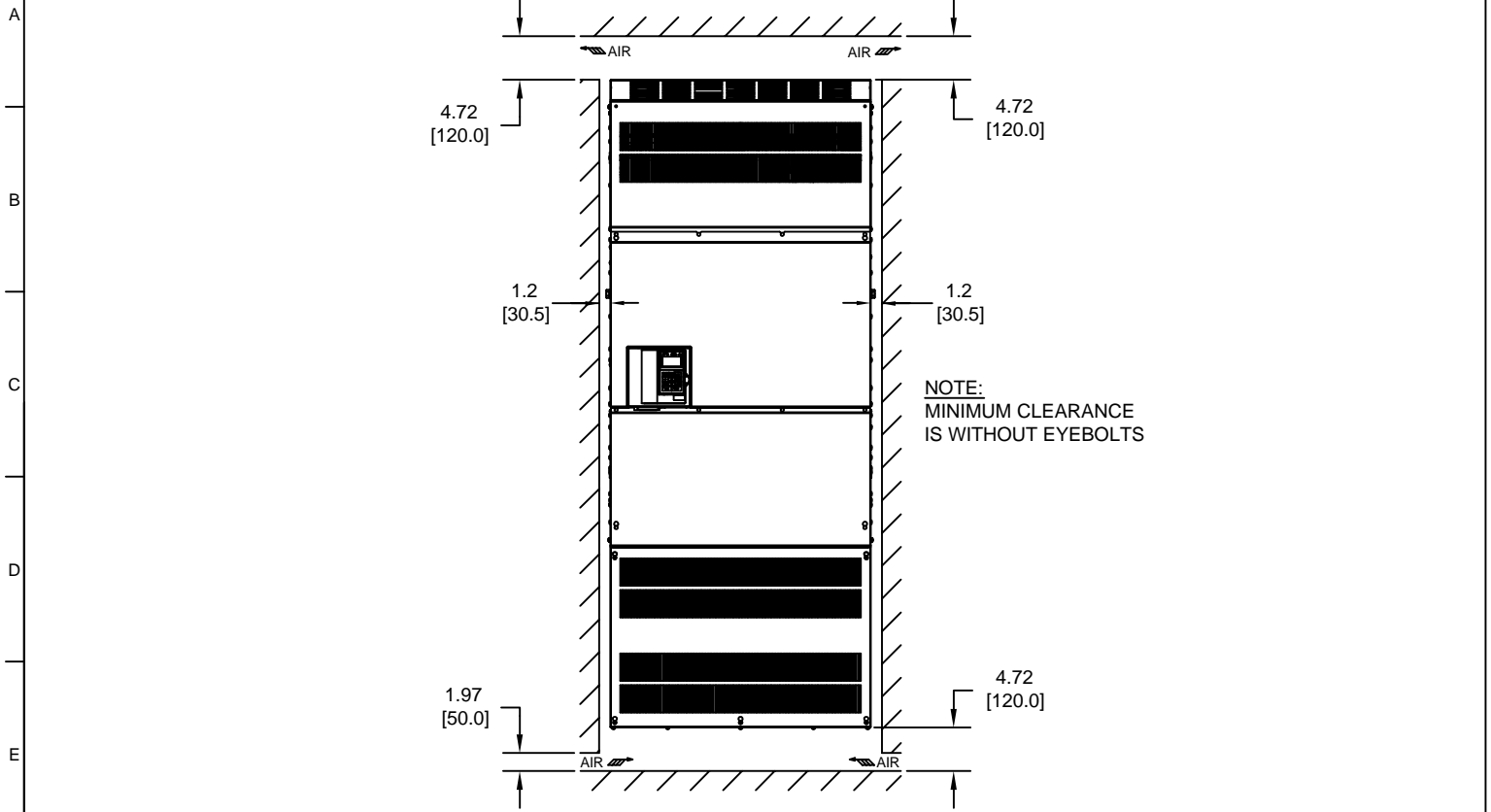
MODEL # CIMR-F7U	TERMINAL SYMBOL	TERMINAL SCREW	CLAMPING TORQUE lb.in.(N.m.)
4185	R/L1, S/L2, T/L3, ⊙, ⊕1, ⊕2, ⊕3, U/T1, V/T2, W/T3, R1/L11, S1/L21, T1/L31	M16	694 TO 867 (78.4 TO 98.0)
	r/1, s200/2200, s400/2400	M4	11.4 TO 12.3 (1.3 TO 1.4)
4220	R/L1, S/L2, T/L3, ⊙, ⊕1, ⊕2, ⊕3, U/T1, V/T2, W/T3, R1/L11, S1/L21, T1/L31	M16	694 TO 867 (78.4 TO 98.0)
	r/1, s200/2200, s400/2400	M4	11.4 TO 12.3 (1.3 TO 1.4)

NOTE: REFER TO APPLICABLE CODES FOR PROPER WIRE TYPE AND SIZE

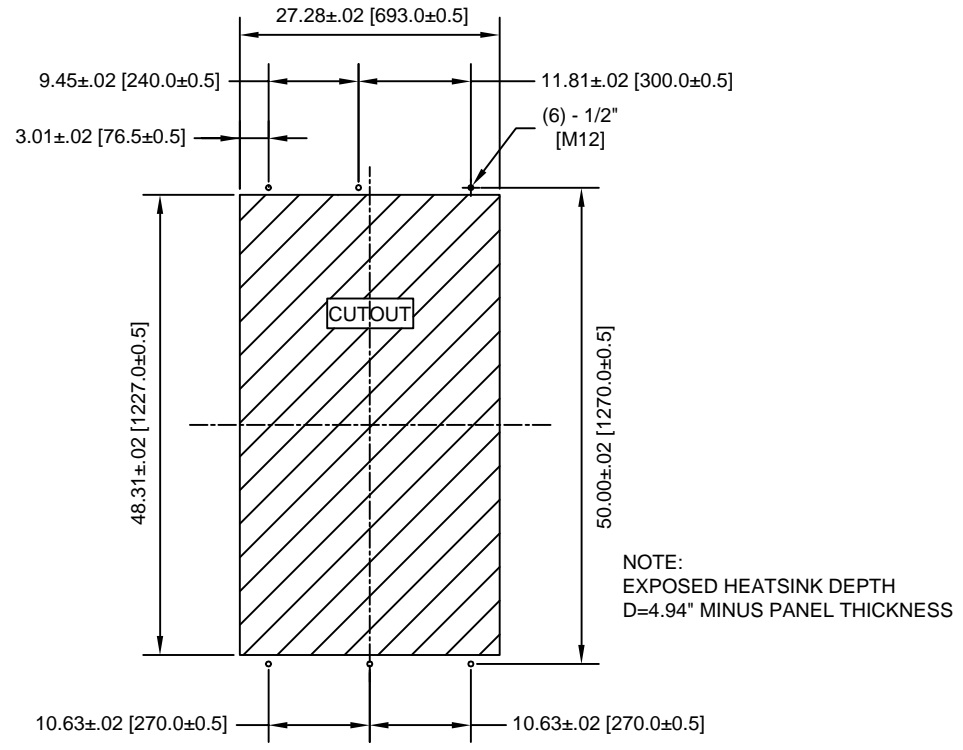
FOR ADDITIONAL DETAILS AND SPECIFICATIONS, CONSULT MANUAL

TOLERANCES/REFERENCES: - - - - -	 YASKAWA <i>A World of Automation Solutions™</i> YASKAWA ELECTRIC AMERICA, INC. Corporate Headquarters 2121 Norman Drive South Waukegan, IL 60085 1-800-YASKAWA http://www.yaskawa.com	DRAWN: J. MATTAS	DATE: 5-21-08	TITLE: F7 DIMENSION DRAWING		
		CHECKED: J. MATTAS	DATE: 7-25-08	FRAME SIZE 14		
		TECH: J. CAIRO	DATE: 8-1-08	NEMA TYPE 1/IP20 ENCLOSURE		
		APPROVED: T. SASADA	DATE: 8-8-08	SIZE: A	REVISION: R00	PAGE: 2 of 3
UNITS: IN[mm]	SCALE: BY VIEW	ORIGINAL DESIGN: -	DATE: -	DRAWING #: DD.F7.FR14.N1.01		


MINIMUM INSTALLATION CLEARANCES (SCALE 1:20)



PANEL CUTOUT FOR EXTERNAL HEATSINK MOUNTING CONFIGURATION (SCALE 1:20)



FOR ADDITIONAL DETAILS AND SPECIFICATIONS, CONSULT MANUAL

TOLERANCES/REFERENCES: - - - - -	 YASKAWA <i>A World of Automation Solutions™</i> YASKAWA ELECTRIC AMERICA, INC. Corporate Headquarters 2121 Norman Drive South Waukegan, IL 60085 1-800-YASKAWA http://www.yaskawa.com	DRAWN: J. MATTAS	DATE 5-21-08	TITLE: F7 DIMENSION DRAWING		
		CHECKED: J. MATTAS	DATE 7-25-08	FRAME SIZE 14		
		TECH: J. CAIRO	DATE 8-1-08	NEMA TYPE 1/IP20 ENCLOSURE		
UNITS: IN[mm]	SCALE: BY VIEW	APPROVED: T. SASADA	DATE 8-8-08	SIZE A	REVISION R00	PAGE 3 of 3
		ORIGINAL DESIGN: -	DATE -	DRAWING #: DD.F7.FR14.N1.01		